

Horizon

The logo for Grasshopper is centered within a large, light green rectangular background. The text "Grasshopper" is written in a blue, sans-serif font, with the letter 'o' in "Grassh" being a smaller, superscripted circle.

Grassh^opper

Communication, dissemination and exploitation plan

Initial plan

Deliverable number: D7.2
Version 1.3



This project is funded by the Horizon Europe / Marie Skłodowska-Curie Staff Exchange under Grant Agreement No. 101182922.

Project Acronym: GRASSHOPPER
Project Full Title: Jumping forward from preclinical development of pediatric cancer drugs to clinical implementation
Call: HORIZON-MSCA-2023-SE-01 (MSCA Staff Exchanges 2023)
Topic: HORIZON-MSCA-2023-SE-01-01
Type of action: HORIZON-TMA-MSCA-SE
Grant Number: 101182922
Project URL: <https://grasshopperconsortium.com>

Authors: Ursula Weber (DKFZ-KITZ), Linda Schild (Máxima), Philippine Doekes (Máxima)

Work package: WP7
Deliverable nature: Report (R)
Dissemination level: Public (PU)
Contractual Delivery Date: 31-05-2025
Actual Delivery Date: 26-05-2025

History of Changes

History of Changes			
Version	Date	Explanation of the changes	Page
1.0	30 April 2025	Initial version	
1.1	19 May 2025	Updates from Linda and Ursula on all sections	ALL
1.2	21 May 2025	Input from Máxima experts on section 3 & 4	6-13
1.3	22 May 2025	Final version	ALL

Table of Contents

1.	Summary	4
1.1.	Deviations from proposal	4
2.	Communication	5
2.1.	Website.....	5
2.2.	Socials	6
2.3.	Newsletters.....	6
3.	Outreach for broad audience.....	6
4.	Dissemination for focused audience.....	7
4.1.	Education and Mentoring program (Courses)	8
4.1.1.	Summer schools	8
4.1.2.	Masterclasses.....	9
4.1.3.	Transferable skill training.....	10
4.1.4.	Intersectoral mentoring program	11
4.2.	Conferences and Events	11
4.2.1.	Satellite Events.....	11
4.3.	Publications, posters and whitepapers	13
5.	Exploitation plan	14
5.1.	Objectives	14
5.2.	Methodology and approach	14
5.2.1.	Identification and analysis of exploitable results.....	14
5.3.	Exploitable Results Identification	15
5.4.	Individual exploitation results	16
5.5.	Commercial Exploitation	18
5.6.	Social and Scientific Exploitation	18
5.7.	Market Analysis & Business Model.....	19

1. Summary

This Communication, Dissemination, and Exploitation Plan outlines the strategic approach to ensure the visibility, accessibility, and long-term impact of GRASSHOPPER project funded under the Horizon Marie Skłodowska-Curie Actions (MSCA) framework. The plan is designed to promote the project's outcomes to a broad and focused audience, including the scientific community, industry, and the general public, in accordance with the Horizon Europe guidelines on Open Science and responsible research communication.

The primary objectives of the plan are:

- **Communication:** To raise awareness of the project goals, progress, and societal relevance among (non-)specialist audiences, using clear and accessible formats across various channels including social media, public talks, press releases, and digital media.
- **Dissemination:** To share research findings with relevant scientific and professional communities via peer-reviewed publications, conference presentations, open-access platforms, and research repositories, fostering collaboration and academic engagement.
- **Exploitation:** To identify, plan to protect, and promote the uptake of project results for societal and economic benefit, which is mentioned as exploitable results.

Targeted efforts will ensure inclusivity, gender balance, and geographical reach, while adhering to MSCA principles on ethics, open access, and data management. Activity overview and timelines are proposed and will be embedded to monitor progress and ensure that the impact strategy evolves in response to arising opportunities.

This plan is integral to the project's sustainability, ensuring that the outcomes of GRASSHOPPER extend beyond the funding period, contributing meaningfully to European research excellence and societal innovation.

1.1. Deviations from proposal

Here we outline and justify the deviations from the originally submitted GRASSHOPPER proposal. While the core objectives and strategy of the CDE plan remain aligned with the commitments in the Grant Agreement, several adjustments are necessary to enhance the plan's effectiveness and respond to evolving circumstances and opportunities throughout the project lifecycle.

The deviations include:

- **Modification of the Mentoring Program:** Due to the limited number of industrial partners actively involved in the project, it was not feasible for them to support all planned mentoring activities for secondees. As a result, the approach has been revised to integrate both sending and hosting mentors into a unified mentoring team, ensuring adequate guidance and continuity for participants.
- **Adjustment of Communication Channels and Formats:** Owing to limited media interest in incremental project developments, particularly from TV and radio outlets, the project has shifted its majority of communication efforts toward more impactful and accessible formats. These include poster presentations, live events, and targeted masterclasses, which have proven more effective in engaging relevant audiences.
- **Flexibility in Summer School and Masterclass Content:** The topics and institutional affiliations of the planned summer schools and masterclasses may change over time. This flexibility is necessary to align with emerging research developments and the availability of relevant expertise within the consortium, ensuring high-quality and timely delivery of training content.
- **Refinement of the Exploitation Strategy:** As the project progresses, some initially anticipated exploitable results may be deprioritized or not realized as expected. Additionally, certain outcomes might be redirected

towards open-source dissemination or academic use. Concurrently, new exploitation avenues have emerged and are being actively explored to maximize the project's long-term impact.

These deviations are carefully considered and implemented to ensure a more responsive, inclusive, and impactful approach, while remaining within the overall scope of the action. All changes were made in accordance with MSCA guidelines and with a clear focus on delivering lasting benefits beyond the project duration.

2. Communication

The GRASSHOPPER consortium seeks to connect with our various stakeholders enhancing visibility and awareness for the project. Communication is dedicated to a focused and broader audience to share objectives, activities, results and successes. All consortium partners are responsible for addressing communication and dissemination throughout the various stages of the project.

Throughout the project the partners will make effort to connect with various stakeholders to enhance awareness of the project and its results. Through the different platforms the audiences will be reached, which we have divided into a broad, public audience category and a focused, more scientific, category. Communication will evolve around informing and promotion of the project, project results and successes, outreach to society showing impact and benefits of the project's activities.

In the follow-up dissemination reports, communication activities will be addressed and elaborated on. Communication tools will include, but are not limited to;

- Project website
- Partner websites
- Hoppers presentations during meetings and events
- Scientific articles
- Conference participation
- Workshop or training participation
- Posters
- Video's and/or recordings
- Social media platforms
- Press releases and newsletters

2.1. Website

All information about the project's structure, research objectives, agenda, findings and meeting progressions are available on our **project website** [Grasshopper - Join a network of knowledge](#). The website went live in January 2025 and is continuously updated by the project managers in collaboration with the seconded researchers to serve the needs of the consortium activities and inform various stakeholders on its progress. Designed to inform both broad and focused audiences, this website will remain accessible even after the consortium project is completed. Both audiences will continuously be informed about this website as the link is embedded in social media posts and incorporated into presentations. Currently, the site includes information about the project, secondments, partners, governance, news, education programs and events.

2.2. Socials

Diverse platforms are used to disseminate new advancements to a wide audience, aiming to reach as many researchers, clinicians and public as possible. This includes all partners social media channels such as [LinkedIn](#) and [BlueSky](#), which will be used regarding research progress, as well as traditional media outlets like TV, radio, and press releases for major breakthroughs. Reposting and retweeting posts by the researchers and numerous partners is essential to gain additional coverage.

2.3. Newsletters

Digital newsletters relevant to patients, or similar platforms to reach patients, will be utilized as a platform to communicate awareness for major breakthroughs relevant to patients on short-term and to incentivize input around potential new therapeutic options.

3. Outreach for broad audience

Various facilities are planned to organize guided visits and engage in other outreach activities. Experts in the field of pediatric oncology, pharmaceutical companies and parent-patient organizations will be mostly informed to take part in these activities by scientific publications, (scientific) meetings, conference presentations and/or newsletters.

During some satellite events, see section 4.2.1., that are open for broader public there will be chances for children, students and parents to learn about our field and our opportunities for spreading knowledge, as we do within Grasshopper.

Awareness around the importance of science and specific societal results from Grasshopper may be promoted via newspaper, radio and/or television depending on the impact level. Results will be shared on our GRASSHOPPER website and during science days.

Each partner support the outreach of any blogs/vlogs/podcasts/video-interviews that will be published on GRASSHOPPERs website and social media accounts.

4. Dissemination for focused audience

Building robust professional networks of experts within the pediatric oncology space is crucial for personnel undertaking secondments, as it significantly enhances knowledge exchange, fosters collaboration, and accelerates skill development. Through active engagement with new teams, institutions, and interdisciplinary experts, secondees gain access to diverse perspectives, methodologies, and cutting-edge research. This not only broadens their technical expertise but also strengthens their ability to contribute meaningfully to innovation within their home organizations. Moreover, sustained networking cultivates long-term partnerships that can lead to collaborative projects, joint publications, and shared resources, ultimately propelling the scientific field forward through collective advancement. Within the GRASSHOPPER program we have incorporated various courses and events that we utilize to foster these network of experts.

At events, research results will be disseminated to our more focused scientific audience, this includes conference presentations, the collaborative summer schools and the satellite events. For dissemination of research results we will use peer reviewed journals in an open access set-up and create a list of the research on our GRASSHOPPER website and each partner website. We will stimulate generation of collaborative papers between beneficiaries and partners during the secondments.

Table 1. Overview of the GRASSHOPPER communication plan for dissemination activities						
	Dissemination activity	What? Type of dissemination activity	Who? Target Audience	Why? Description of the objectives	Status of the activity	Actions
FOCUSED audience	Disseminate results of GRASSHOPPER program	Publications, presentations at conferences, scientific meetings (SIOPE, ITCC, ACCELERATE, CCE), LinkedIn, BlueSky, GRASSHOPPER website	Academic Community	Promote exchange between researchers and clinicians	Number of scientific publications, citations, IRPs translated into clinical trials, new collaborations	
	Communicate research findings and implications to relevant companies	Presentations and meetings with other R&D centers, e.g. ACCELERATE meeting, GRASSHOPPER website	Industry (SMEs/EFPIA)	stimulate innovation, development of novel drug targets, exploitation of IP	Number of meetings, signed agreements, collaborations in the frame of the project	
	Discuss potential new therapeutic options with parents	Newsletters of patient organisations (VKN, Villa Joep, SKC), presentations at annual meetings for parents, GRASSHOPPER website	Parents of patients	Create awareness	Number of meetings, including presentations	
	Interact on research topics	BlueSky or LinkedIn, Children's advisory board	Patients	Create awareness about research	Number of reactions/likes	

The knowledge exchange will be further enhanced through the educational program where the secondees can share their expertise in the specialized courses on transferable skills, at the satellite events, the summer schools and during

the masterclasses. These activities have a broad scope and are eligible for secondees at various stages of development.

All beneficiaries and associated partners contribute to the networking events (online and/or live participation).

4.1. Education and Mentoring program (Courses)

The GRASSHOPPER program offers different courses for the Hoppers to choose from and organizes scientific focused courses during the summer schools. As junior scientist/clinicians are interested in other topics than senior scientist/clinicians, and researchers from associated countries may be less familiar with certain topics (publications, patents) than researchers from EU member states, it is important to facilitate choices in these courses.

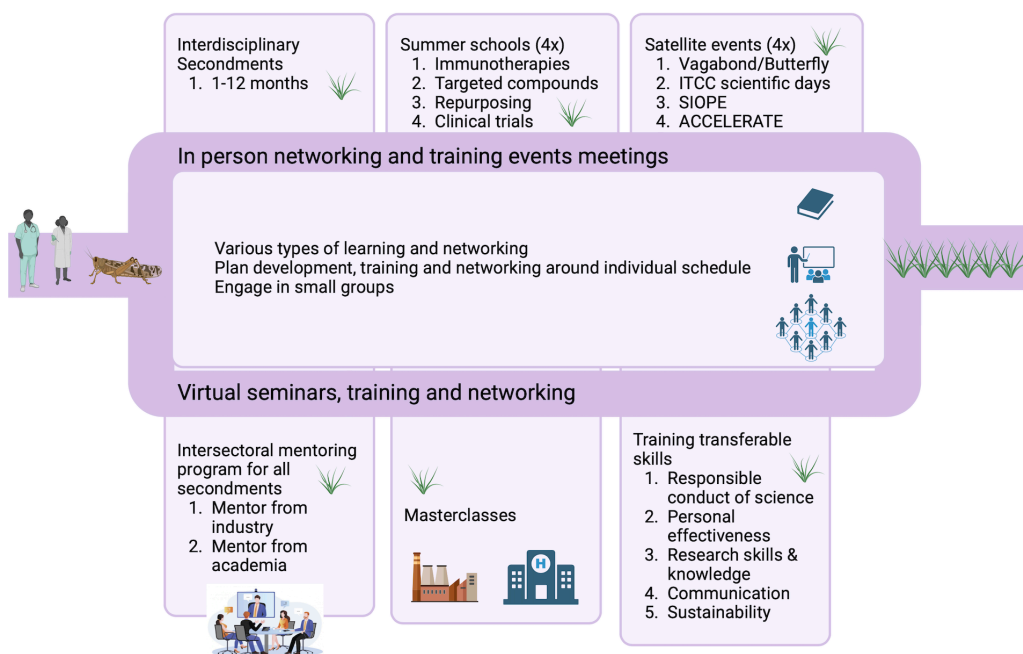


Figure 5: Overview GRASSHOPPER training and networking events. The consortium will organize in-person and virtual training activities and networking opportunities to maximize sharing of knowledge and expertise between all beneficiaries and partners.

4.1.1. Summer schools

Yearly summer schools will be organized with in depth scientific courses on pediatric oncology. The summer school, when possible, will be combined with the yearly consortium meeting and accessible for all consortium members. The summer schools are in person events with a duration of 3-4 days, with a program consisting of a master class with at least 2 keynote speakers, lectures from subject matter experts from the hosting center and presentations from the researchers on sharing experiences and results. All Hoppers will be requested to give input on the content of the summer schools via a workgroup platform.

Summer school number	Topic; subject to changes	Description	WP	When?	Hosting centre
1	Immunotherapies/ Targeted therapies/ Repurposing of adult drugs/ Implementation of clinical trials	TBD	WP3/4/5/6	SEP 2025	Máxima
2	Immunotherapies/ Targeted therapies/ Repurposing of adult drugs/ Implementation of clinical trials	TBD	WP3/4/5/6	SEP 2026	TBD
3	Immunotherapies/ Targeted therapies/ Repurposing of adult drugs/ Implementation of clinical trials	TBD	WP3/4/5/6	SEP 2027	CCE - France
4	Immunotherapies/ Targeted therapies/ Repurposing of adult drugs/ Implementation of clinical trials	TBD	WP3/4/5/6	SEP 2028	TBD

Additionally Hoppers may choose to participate in the CCE summer schools, which will be promoted via the GRASSHOPPER portal. CCE complement the consortium with their long-lasting experience on training events and large network to disseminate and exploit the results of the GRASSHOPPER consortium.

4.1.2. Masterclasses

Four times a year the consortium will invite a top-level scientist, speaker from academia, regulatory institutions and/or industry, such as biotech startup or tool companies, to give a hybrid masterclass, where the online session will be recorded and available for review at later stages. The masterclass will be live in one of the partner institutes and online for other members of the consortium. The masterclasses have a duration of 1-2h and be accessible for all consortium members, but also for other participants from the institutes involved. According to the expertise of the institutes the following division could be made regarding the topics of masterclasses. However this could switch or change depending on the possibilities and wishes from the consortium, the table is below is an example of what the topic division will look like.

One masterclass will be dedicated to IP management within research projects and will be planned during the first half of the project, to upgrade the Hoppers knowledge on this topic. Organizing this IP workshop and regular contact with all consortium members will facilitate explaining how to identify results that can potentially be a target for protection and how protected know-how can interfere with research work.

To be filled in during each iteration of this report:

Table 3.: Overview GRASSHOPPER masterclasses					
Slot	Topic	Description	Who?	When?	Hosting centre
1				2025 (during summer school)	
2				2025 (during summer school)	
3				2025	
4				2025	
5				2026	
6				2026 (during summer school)	
7				2026 (during summer school)	
8				2026	
9				2027	
10				2027 (during summer school)	
11				2027 (during summer school)	
12				2027	
13				2028	
14				2028 (during summer school)	
15				2028 (during summer school)	
16				2028	

4.1.3. Transferable skill training

To support the development of transferrable skills among secondees, a dedicated budget is made available to the beneficiary institutes. This funding is intended primarily for secondees to participate in relevant courses to enhance their current skill set, increase career opportunities and development of individual researchers, which they can request through their sending institute. GRASSHOPPER provides a curated list of suggested courses on our website, complete with links and resources. Once a course is approved by the institute, the secondee may enroll. Secondees may also submit suggestions for specific topics via their institute's GRASSHOPPER contact person. While the budget is earmarked for secondment-related training, it can also be used to benefit a broader group within the institute. Beneficiaries are required to report on the use of the funds, including details of the course, participants involved, and define how it supported the secondee's development. Associated partners can also contribute to the project by providing a transferable skill training.

As GRASSHOPPER we have defined 5 competencies which the secondees may choose to develop:

- Responsible conduct of science (e.g. GDPR and Research Data Management)

- Personal effectiveness (e.g. Personal Development courses)
- Research skills & knowledge (e.g. Statics in the Lab R2, AI course by Horizon Europe, handling personal data in research, Research Data Management, statistics, grant writing and intellectual property/entrepreneurship)
- Communication (e.g. Intercultural communication)
- Sustainability (e.g. Greenlabs following the LEAF Framework)

Table 4.: Examples of how transferable skill topics may be linked to a competence	
Example Topics	Related Competence
Incorporation of pharma funded research in academia	Research skills & knowledge
Pharmaceutical research and development	Research skills & knowledge
Repurposing of adult drugs and Phase 1-3 trials	Research skills & knowledge
Green Labs according to Laboratory Efficiently Assessment Framework (LEAF)	Sustainability
Training communication and outreach	Communication

To be filled in during the duration of project and reported in next iterations of this report:

Table 5.: Overview of the GRASSHOPPER virtual transferrable skills trainings						
	Competence	Topic	Format	When	By who	Responsible partner
Researchers		R2 training			VUMC	Máxima
		Green Labs			Marlinde van der Boogaard	Máxima

4.1.4. Intersectoral mentoring program

The multisectoral and multidisciplinary secondments are supported by mentoring teams including experienced mentor(s). All researchers going on secondment will be supported by our GRASSHOPPER mentoring program. The mentoring team will consist of one senior top-level scientist from the hosting institute and one from the sending institute, which will be matched as a last step of the secondment organization, but before the secondment is initiated.

Together with the mentoring team the secondee will write a secondment plan which contains an overview of the planned work, a local support plan (buddy system), and sustainability plan. The researcher will get together with the mentoring team before, during (secondments > 6 months) and after the secondment to ensure aims and goal of the secondments are met.

The intersectoral coaching of the researcher will benefit the career of the researcher and ensure optimal transfer of knowledge between institutes.

4.2. Conferences and Events

4.2.1. Satellite Events

The exchange of knowledge between the beneficiaries and partners will be further enforced via the specific the networking events and the satellite events. Satellite events take place once a year during existing European meetings

(in-person event). During the satellite events, the secondees may have the opportunity to present their work, if deemed appropriate by the organizing committee, and the partner institutes will be represented by larger number of scientists that can interact with the secondees.

The aim is to make European pediatric oncologists, researchers, patients and patient advocates, regulatory experts and industry aware of the program, share knowledge and collect input for sustainability of the consortium and discuss new research ideas and collaborations. These satellite events will take place during existing European meetings (Table 4) to limit unnecessary travel, limit financial budget and time. In addition, it will stimulate equal access to these events, as partners that are previously not able to travel to these events can use budget from the GRASSHOPPER program to cover their travel costs and accommodation.

Grasshopper will be active during the ITCC conferences and training days to disseminate and exploit results.

Table 6.: Overview GRASSHOPPER satellite events (subject to change, will be updated in each report iteration)		
Meeting and audience Timing	Existing meeting	Focus GRASSHOPPER satellite event
Twining program or Butterfly/vagabond?: PhD students, pediatric oncologist, researchers, industry (Year 1)	MSCA PhD training networks, experienced with secondments in pediatric cancer, get together once a year for sharing data and training during summer school(s)	Sharing of secondments experiences, input summer schools, create best practices (0.5 day)
ITCC training days (Year 2)	Education ITCC Dynamic 2-day course where ITCC members and experts lead interactive lectures and workshops, offering insights into every stage of drug development. From the nuances of pediatric drug development to ethical considerations and the integration of clinical genomics data in precision medicine programs, participants will gain a deeper understanding of the field.	Scientific presentations consortium and clinical trial advances.
ITCC scientific days (2x): pediatric oncologist, researchers, patient advocates, consortium members (Year 1 & 3)	Centered in 3 pillars: leukemia and lymphomas, solid tumors, and brain tumors; brings together young and experienced researchers to surpass boundaries and create new innovations. The core lies in optimizing treatment	Scientific presentations consortium, newest research advances, new research ideas discussions (1 day)
SIOPE: Pediatric oncologist, researchers, consortium members (Year 3)	European Society for Pediatric Oncology Europe, pan-EU organization representing all professionals working in the field of childhood cancer. The network has > 2500 members across 35 EU countries.	Scientific presentations consortium, newest research advances, new research ideas discussions (1 day)
Accelerate: Industry, regulatory experts, pediatric oncologist, patient advocates and consortium members (Year 4)	Network of four equal stakeholder groups: academia, industry, patient advocates and regulators. The network is patient-centered and problem-solving.	Sustainability, clinical trial advances and implementation, equal access, new research proposals and collaborations (1 day)
Science Weekend Maxima (Year 2)	Weekend van de Wetenschap 4 & 5 oktober 2025 Children and parents will be taken into the world of researchers, do experiments together and get a tour of the laboratories.	Clinical trial advances and implementation, equal access, new research collaborations (2 day)

4.3. Publications, posters and whitepapers

To be filled in during the project as outcomes are realized:

Table 7.: List of publications, posters and whitepapers to be filled during the project timeframe											
Secondment	Type of Publication	Title	Authors	Title of journal	Journal number	Peer reviewed	Availability in open access	Type of PID	PID	PID of deposited publication	DOI

5. Exploitation plan

Currently, 15.500 pediatric patients are diagnosed each year with cancer in Europe. Of these patients, 2000 children (1500 solid and brain and 500 hematological cancers) die each year (ECIS 2022). This means that 2 school classes (+/- 20 children per class) of children dying every week in Europe. The average years of productive life lost (YPLL), a measure that estimates the potential years of life lost due to premature death, for childhood solid cancer patients is 42 years. Pediatric cancer can have significant psychological, emotional, and financial impacts on patients and their families. including loss of education and work opportunities, decreased quality of life and increased healthcare costs.

The exploitation plan lays out how we can protect and exploit the knowledge outcomes of the GRASSHOPPER secondments, further implementation of new tools, methodologies and solutions. These results will be shared through the dissemination and communication activities, as mentioned before.

5.1. Objectives

The exploitation objectives are to:

- Identify results from the secondments that could potentially be exploited by utilization of survey's at end stage results.
- Ensure protection of exploitable results before any publication and/or dissemination activity.
- Appoint and activate an IP Management Committee consisting of one representative of each beneficiary and associated partner, consulted by a colleague from the knowledge transfer office (KTO) of each institute
- Monitoring the protection of IP and assessing possible exploitation/commercialization strategies

5.2. Methodology and approach

5.2.1. Identification and analysis of exploitable results

- Depending on the exploitation result (ER) KTO offices and IP Management Committee will discuss possible patent applications, initiate discussions with a commercial party, advise on a start-up or talk to an existing market party.
- IP experts will advise on intellectual asset management and protection.
- Most partners involved in the consortium have experience with knowledge projection and exploitation by business developers and will ensure the best exploitation pathway comply with the MSCA rules for IP as detailed in the GA.

5.3. Exploitable Results Identification

Our target audiences will be reached with the following exploitation results in order to realize the connected impact:

Table 8.: Type of stakeholders for GRASSHOPPER and related results.		
Stakeholder	Exploitation Result Type	Impact
Research community	Publications, Presentations, Data, Software	Further research activities and publications containing new insights
Industry	Patenting of new products or processes, standard tests or methodologies	Development of a new product or service Improvements of production processes and competitiveness Improve product quality and consumer protection
Civil society	New products, services or technology Trainings, presentations and visits Skills and knowledge	Increase quality of life, Improve pediatric oncology, Increase product quality control,

5.4. Individual exploitation results

To be updated once secondment plans are known.

Table 9.: Overview of potential exploitations per partner						
Partner	Key Exploitable Result	Short description	Who are the targeted End Users & Stakeholders?	Data protection, compliance, and rights/protection timing, etc.)	ethical IP plans (type, to be applied	Exploitation/ dissemination measures to be applied
The Princess Máxima Centre (NL)	<i>Data Platform</i>	The data platform can be used for finding data within your organization. You can search through pseudonymized metadata of all patients who have signed the broad informed consent. It is the ambition to make all valuable datasets findable, based on their defined 'internal embargo-free layer'.	Personnel who are trained and received access from Biobank and Data Access Committee, or similar. Research community	For external personnel, access will be limited. For internal personnel, they will be trained and granted access for the required sections of the data within the platform. How the platform integrates various databases is trade secret of the organization.		Availability of tech transfer file and IDT configuration requirements for implementation to other organizations.
Institute Curie: (FR)	<i>Liquid biopsy</i>	Less invasive method to monitor tumor burden, metastatic spread and clonal evolution in circulating DNA.	Personnel involved in precision medicine following data protection requirements. Industry	For external personnel, access will be limited to the needs of the study and subject to an Observer Agreement on the hospital side and/or Confidential Disclosure Agreements on the research side. Data are pseudonymized		TBD after specification.
Institute Curie: (FR)	<i>DNA sequencing (genomic data).</i>	Method to determine tumor DNA sequence highlighting molecular alterations	Personnel involved in precision medicine and translational research following data protection requirements Industry	For external personnel, access will be limited to the needs of the study and subject to an Observer Agreement on the hospital side and/or Confidential Disclosure Agreements on the research side. Data are pseudonymized		TBD

Table 9.: Overview of potential exploitations per partner						
Partner	Key Exploitable Result	Short description	Who are the targeted End Users & Stakeholders?	Data protection, compliance, rights/protection and plans (type, timing, etc.)	ethical IP (type, to be applied	Exploitation/ dissemination measures to be applied
Institute Curie: (FR)	Clinical database	Patient's medical reports - Patient data will be discussed during Tumor Board meeting where external personnel making staff exchanges on setting up and monitoring clinical trials could participate	Physicians and Medical personnel Research community	For external personnel, access will be limited to the needs of the study and subject to an Observer Agreement on the hospital side and/or Confidential Disclosure Agreements on the research side, in addition to clinical secrecy.		
Rigshospitalet (DK)	Evolutionary constraint genes in cancer predisposition, prognosis and treatment stratification.	The mutational constraint on genes in carcinogenesis for screening, prediction of disease progression and personalize therapy strategies.	Diagnosticians and therapy developers Civil society	Any software developed for release is expected to be open source under appropriate copyright license, e.g. MIT or GNU.		Findings will be disseminated by publications, potential code will be distributed on appropriate hosting website, e.g. github.
The Aghia Sophia Childrens Hospital (GR)	Clinical application of cutting-edge diagnostics and treatment development of pipeline	A pipeline, including clinical and genomic data analysis, will be developed for the personalized diagnosis and therapy of pediatric cancer patients	Diagnosticians and physicians Civil society	Depending on the novelty of the technology or treatment patents will need to be filed.		Findings will be disseminated by publications, potential code will be distributed on appropriate hosting website, e.g. github.
Children's Cancer Institute CCI (AU)	New therapeutic strategies (including the use of immunotherapies) for pediatric cancer patients, based on genomic profiling and preclinical testing data.	Preclinical platform development to assess new therapeutic strategies (including immunotherapies) for personalized treatment of childhood cancer.	Patients Civil society	NA		All data will be published in peer reviewed journals

5.5. Commercial Exploitation

As GRASSHOPPER has only recently be initiated, the definition and validation of concrete Exploitation Results (ERs) will evolve as outcomes from the secondments become clearer. Nevertheless, the consortium has identified several promising areas with potential for long-term impact. These include access to high-quality data on immune system development and the tumor microenvironment (TME), which may support innovation in immunotherapy development, including CAR-T cell technologies (WP3). The project also aims to work on characterized preclinical model systems and platforms for European trial implementation (WP6), which could facilitate the development and clinical translation of industry-driven immune cell products.

In line with Horizon Europe's objectives, GRASSHOPPER promotes academia-to-industry knowledge transfer and is expected to generate open-access resources that may be exploited by other stakeholders in the field of diagnostics and therapeutics. Additionally, through WP2, the project fosters a robust international, interdisciplinary, and inter-sectoral network, supporting the development of highly skilled researchers. These networks, expanded through targeted secondments and structured networking events, are likely to result in new scientific collaborations, future grant applications, and partnerships with private and industrial stakeholders.

Over the course of the project, further assessment will be conducted to refine specific exploitation strategies and align them with the actual outcomes. GRASSHOPPER's training and capacity-building activities will contribute to the development of entrepreneurial and innovation-ready researchers, aligned with the EU's goals for a competitive, knowledge-based economy.

5.6. Social and Scientific Exploitation

The GRASSHOPPER consortium is designed to deliver significant benefits to the scientific and medical communities, particularly in the field of pediatric oncology. As the project progresses, outcomes from various work packages are expected to advance both scientific knowledge and clinical skillsets. WP3 will generate a deeper understanding of the immune system and tumor microenvironment (TME) in pediatric cancers. WP4 is aimed at validating targeted therapeutic interventions, while WP5 will contribute to improved drug availability for pediatric cancer patients. WP6 focuses on the implementation of pan-European clinical trials, thereby enhancing clinical research infrastructure and harmonizing treatment protocols.

A key scientific output will be the expansion of existing tumor profiling repositories enriched with immune and TME characteristics, providing pediatric oncology researchers with valuable data for translational research. In parallel, healthcare professionals, including oncologists, pediatricians, and nurses, will benefit in time from access to adult cancer therapies repurposed for pediatric use, and their potential implementation through European trials.

The international and inter-sectoral collaboration fostered through WP2 is expected to strengthen data and infrastructure sharing, enabling better reuse of resources and greater harmonization across European research centers and hospitals. This will contribute to more efficient research and faster translation of scientific discoveries into clinical application.

The long-term clinical impact includes the integration of promising agents from early-phase trials into frontline treatment protocols. This is expected to improve not only cancer-free survival rates in children but also quality of life by reducing long-term toxicities and secondary malignancies, an outcome strongly aligned with the goals of Sustainable Development Goal 3 (Good Health and Well-being). Reduced exposure to cytotoxic treatments may also enable children to return to school earlier and lead to decreased healthcare burdens for families, thus increasing societal trust in innovative therapies.

Furthermore, GRASSHOPPER will contribute to the development of policy and regulatory frameworks through WPs 2, 6, and 7. Engagement with key stakeholders may support evidence-based updates to pediatric trial legislation. The frameworks developed for European trial implementation in pediatrics may be applicable to other disease areas, promoting regulatory consistency and equitable access to new therapies across EU Member States. Finally, through the work of WP7, the project will contribute to building public confidence in novel therapeutic approaches.

5.7. Market Analysis & Business Model

A detailed Market Analysis and Business Model will be included in this section if, during the course of the secondments, exploitable results (ERs) with clear commercial potential emerge. The inclusion of this component will depend on the relevance, feasibility, and maturity of the outcomes. Should such results arise, we will assess the market landscape, identify potential customers or sectors, and outline a preliminary business model to support further commercial development. If no commercially viable ERs are identified, this section will remain limited or omitted accordingly.